

KICK-OFF DATE

The **We're on a Roll! Campaign** will officially kick off on Sunday, September 25th. We are hoping for 100% participation from the congregation!

Please prayerfully consider what you can give to support our church.

Kindly return your pledge card by Monday, November 7th.



Session Members

Jane Asdal, Clerk

Nancy Burrows

Tom Ewig

Kerra French

Olin Friant

Bonnie Gannon

Anne LaPré

Tom MacCowatt

Larry Malm

Brenda Myers

Mike Phillips

John Thomas

Carol Conger Vellekamp

First Presbyterian Church of New Vernon
PO Box 218
New Vernon, NJ 07976

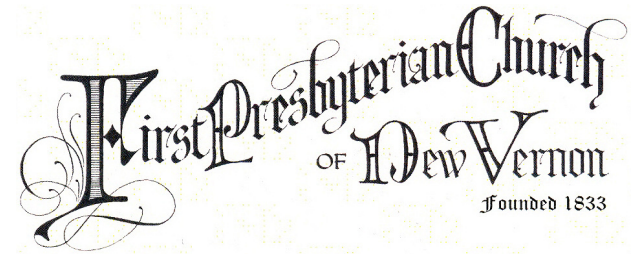


Phone: (973) 538-8394

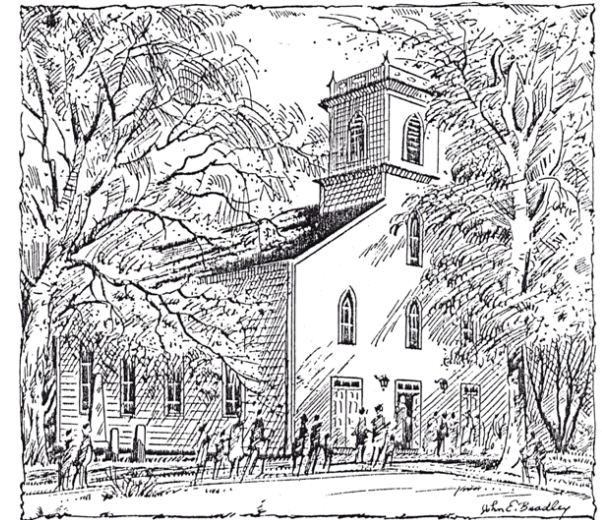
Fax: (973) 538-3969

Email: office@pcnv.org

Web address: pcnv.org



We're on a Roll!



2012
Stewardship Campaign

FIRST PRESBYTERIAN CHURCH STEWARDSHIP CAMPAIGN 2012

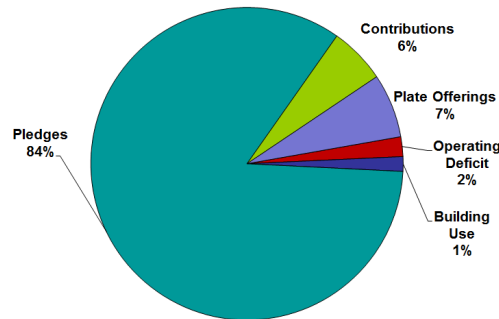
WE'RE ON A ROLL!

As the theme of this year's Stewardship Campaign states, the First Presbyterian Church of New Vernon is "on a roll!" We have had a fruitful year in terms of the involvement of our church family in our Christian Education Programs, outreach efforts, and social events, including:

- Bible Studies
- Sunday School
- NOOMA spiritual film discussions
- Community Soup Kitchen
- Movie Nights
- Christmas Luncheon
- Children's Christmas Pageant
- Chancel Choir Christmas and Easter Programs
- Silent Auction
- Deacons' Ministry
- Faith and Fitness Hikes
- 8 New Members from the Confirmation Class of 2011

Church Funding Sources

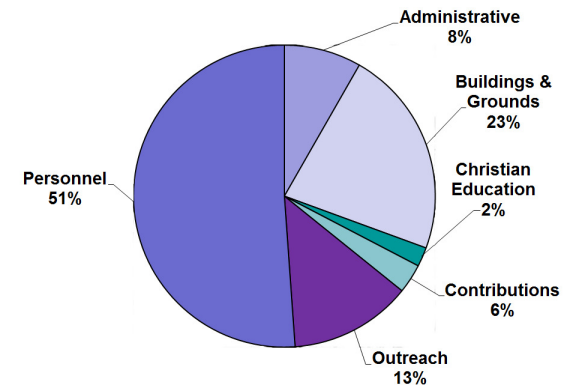
We must also remember that, individually, we are all "on a roll" of another kind—the church rolls. As a member of our church, each of you has a responsibility to support the Church financially so that we continue to grow and thrive in our community.



Church Funding Sources for 2011

Pledges are our most important source of funding. By making a pledge now, you will help the Church effectively plan for the coming year.

Church Budget Challenges



Church Budget Uses for 2011

Given the difficult economic times, the Church has run an operating deficit for the past several years. The Session of the First Presbyterian Church of New Vernon continues to look for ways to cut expenses and increase revenues without sacrificing important programs. As the Church is still budgeting an operating loss for 2012, we are asking our members, first, to make a pledge and, second, to consider increasing their pledge by 5% over last year to close the gap.